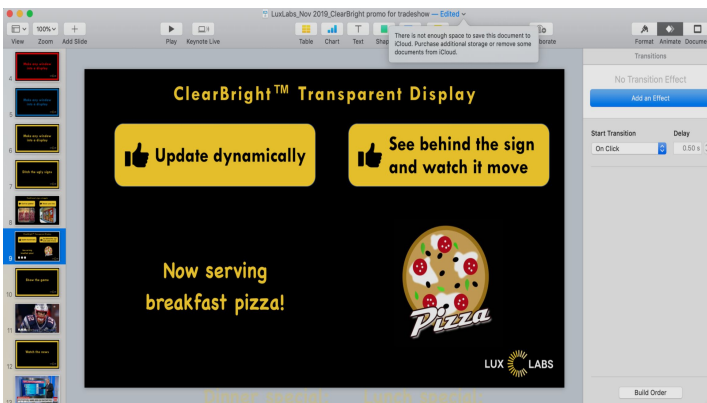




ClearBright™ Transparent Projection Film - Start up Guide

- **Construction:** ClearBright™ is a 3 part film with the functional material sandwiched between protective layers on each side (see spec sheet for more details). One protects the adhesive which will be noticeably sticky when pulled up. The other protects the nanoparticle side which will not feel sticky since it has no adhesive. Keep the nanoparticle protection layer on when applying the film but remove before using to improve optical clarity.
- **Application:** The wet application method is used for most installations. Find detailed instructions on our FAQ page: luxlabsdisplays.com/faq. This method is familiar to any commercial sign installer. We always recommend rapid tac application fluid due to its superior evaporation properties along with a stiff PA-1 style squeegee. Here's an outline of the application steps:
 - 1) Thoroughly clean and wipe dry the application surface
 - 2) Spray rapid tac onto surface and wipe
 - 3) Spray surface again with Rapid tac but DO NOT wipe
 - 4) Lift adhesive protective layer on ClearBright™ and spray with rapid tac. We recommend latex gloves at this point to prevent fingerprints on the adhesive.
 - 5) Apply Clearbright™ to surface
 - 6) Squeegee hard working from inside towards the edges. Press hard to remove all bubbles. The outer protective layer ensures you won't damage the film.
 - 7) Continue squeegeeing to work bubbles out from under ClearBright™. Your goal is to remove as much liquid as possible. The harder you squeegee and more liquid you remove, the better the film will look.
 - 8) Let dry 3-5 days and remove top protective layer before use
- **Set-up:**
 - Basic overview: luxlabsdisplays.com/turn-you-window-into-a-display
 - Projector recommendations and solving common problems: luxlabsdisplays.com/faq

- **Powerpoint works great:** Export and save as a video so you can easily play your content on loop
- **Experiment with colors:** Dark reds and blues don't appear as bright compared to yellow and white.
- **Make it move!** Use the animate features on powerpoint to create eye catching imagery.
- **Black Background:** Set your content to a black background for that eye catching floating on glass look



**Powerpoint slide
as it appears on a
computer**



**Powerpoint slide
projected onto
ClearBright™**

*Projection using viewsonic PA503s projector with 3600 lumens